

■ Corel enters CAD arena by introducing CorelCAD

Corel has introduced CorelCAD, a brand new cross-platform CAD (computer-aided design) program targeted to architects, engineers, and a variety of general manufacturing enterprises. This package delivers native DWG support (the industry standard CAD file format), and the ability to navigate between 2D and 3D design environments in cross-platform workgroups.

To create CorelCAD, the company partnered with Graebert GmbH. With this new product, Corel offers CAD users what it says is an intuitive environment with familiar command bars, aliases, menus, and toolbars. In addition, CorelCAD is designed to provide excellent compatibility, as it works natively with the AutoCAD DWG file format. That means there's no need for an import/export process to read and write files in the industry standard format. CorelCAD supports designers in both the 2D and 3D space. Alongside a large set of 2D drawing features, the program includes a set of 3D solid modeling tools.

Introducing
CorelCAD

CorelCAD is designed to be easily customizable to meet the needs of a variety of businesses and projects. Users can fine-tune the interface and save custom workspace configurations in user profiles. These can be deployed throughout an organization to tailor the interface to specific project needs and to maximize productivity.

Courtesy: www.macworld.com



Book Post

If undelivered, please return to:



■ GIS quick facts

What is GIS and why it is important for engineers?

- ❖ Geographic Information Systems (GIS) provide a platform for displaying and analyzing spatial data.
- ❖ GIS systems allow you to view multiple layers of data simultaneously.
- ❖ GIS is a powerful tool for visualization, spatial analysis, and mapping.
- ❖ GIS provides a way for engineers to overlay all of the data that is important to the decision, so that they can evaluate alternatives considering multiple factors

- ❖ GIS also provides a platform spatial modelling.
- ❖ GIS provides a visual tool for analyzing and presenting decision criteria.



Please send your feedback to the Editor - Ms. P. Malarvizhi, Manager - International Business, CCTS at p.malarvizhi@caddcentre.ws

Co-Editor - A. Niranjani, Graphic Designer - R. Rajakumar ■ CADD Centre and CADD Centre logo are registered trademarks of CADD Centre Training Services Pvt Limited. ■ All the above mentioned brand names and trademarks belong to respective owners & acknowledged.

■ CADD ZOOM is an internal monthly newsletter of CADD Centre Training Services. For free circulation to its employees & customers!

Corporate Office: #91, Dr. Radhakrishnan Salai, Gee Gee Crystal, 8th Floor, Mylapore, Chennai - 4. Ph: (91 44) 4596 6100



CorpCom

www.caddcentre.ws

CADDZOOM

Monthly Newsletter

YOUR CAD / CAM Highway



VOLUME 7 ♦ ISSUE 05 ♦ AUGUST 2011

AutoCAD WS

- Edit your designs on the go

Key features

- ❖ **Online DWG viewer** - Access your AutoCAD drawings from anywhere. All you need is a web browser.
- ❖ **Web-based CAD** - Edit drawings online using many familiar and intuitive drawing and editing tools.
- ❖ **CAD for mobile devices** - Work on AutoCAD drawings directly from your Apple iPad, iPhone, or Google Android device.
- ❖ **No software required** - Invite team members to review and edit DWG drawings online.
- ❖ **Collaborate in real time** - Conduct online design reviews with participants in multiple locations.
- ❖ **Track and manage changes** - Record changes to designs in a timeline for version control and auditing.
- ❖ **Edit Offline** - Work with your DWG files offline without a 3G or Wi-Fi connection from your mobile device.



- ❑ AutoCAD WS - An overview
- ❑ Go green with BIM
- ❑ Tech Talk

The AutoCAD WS web and mobile application for AutoCAD software lets you view, edit, and share DWG drawings through a web browser or mobile device. You can now store AutoCAD drawings and project files in an easy-to-access online workspace. View and edit your designs online or on your mobile device. Share and collaborate easily with others; there's no software required, and it's free.

AutoCAD WS mobile app offers a simplified, intuitive set of viewing, editing, and markup tools so you can work on your designs while you are on the go. Open drawings from email attachments, sync your files from the web, or upload drawings directly from AutoCAD software. Drawings can also be saved locally so you can work in the field without an Internet connection.

❖ Freedom and Flexibility

Upload files directly from AutoCAD software

and then view and edit designs either on your computer with the free cloud-based web app or on the go with the mobile app for iPhone, iPad, and Android devices.

❖ Take Designs with You

Easily upload and access your files via your AutoCAD WS online account from your mobile device, web browser, or AutoCAD 2012 software. The AutoCAD WS mobile app accesses your online account, so your files and folders are available—whether you log in from your mobile device or web browser. To work in the field without an Internet connection, simply save drawings locally to your device.

❖ Edit, Share, Collaborate

Experience the freedom of the AutoCAD WS web and mobile app right away. Simply create an online account and download the AutoCAD WS mobile app to your Android or



In this issue

iOS device. Upload files to your online AutoCAD WS account and access them from anywhere in the world with the AutoCAD WS web app. For a mobile CAD experience, sync online files and then view and edit them using your iPad, iPhone, or Android device.

- ❖ **Edit** - Use a simplified set of tools to edit DWG files via a mobile device. Or edit via your web browser with more than 100 familiar AutoCAD commands and shortcuts.
- ❖ **Share** - Set permissions to let others view, edit, or download drawings.
- ❖ **Collaborate** - Facilitate real-time collaboration by co-editing drawings with other users at the same time.

Cloud Computing Advantages

The AutoCAD WS web and mobile app incorporates the services of Amazon Simple Storage Service (S3), to store all data imported into the AutoCAD WS web and mobile app, and by using cloud computing, the AutoCAD WS web and mobile app provides better access, support, and scalability.

Users of AutoCAD WS web and mobile app can also connect to other storage folders, including Autodesk Buzzsaw, Dropbox (through DropDAV), Microsoft SharePoint, Windows Server 2008, Box.net, MobileMe, and Egnyte, and other cloud storage providers supporting the WebDAV protocol.



Courtesy: www.autocadws.com

Autodesk Revit Architecture 2012

- ❖ **Worksharing** – You can now graphically identify many aspects of elements, such as the ownership status, specific owners and which workset they belong to. There are also balloon notifications for worksharing requests to make it easier to collaborate so that you can access a feature that someone else has borrowed. These work with Revit Server.
- ❖ **Citrix Support** – Using Revit with a cloud computing model has recently been on many users radar because of Revit's large file sizes. Having an out of the box solution to this using Citrix is a great step to getting a server setup for users to access Revit.
- ❖ **AutoCAD DWG Export** – The Revit DWG export has been improved to create a more workable AutoCAD DWG. You can now assign properties such as dimension styles, layers, linetypes, and fonts. These settings can then be saved and reused when you are finished.
- ❖ **Create Parts and Divide the Model** – This allows you to break common elements such as walls into the individual pieces. Each of these individual pieces can be manipulated and scheduled individually.
- ❖ **3D View Lock** – This makes it much easier to annotate 3D Views. Previously, 3D views could not be annotated so this can be a great tool for presentations and to enhance the clarity of your details.

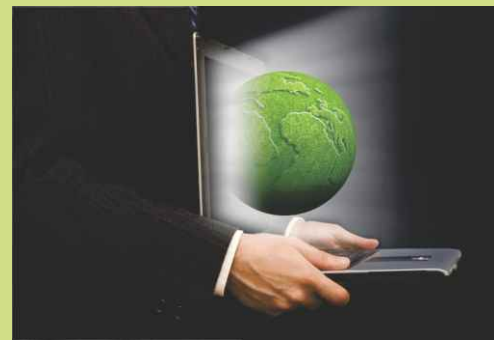
Revit Structure 2012

- ❖ **Multiplanar Rebar** – It is now possible to create rebar that accurately models what you want constructed. Rebar with bends in multiple planes are much easier to create.
- ❖ **Rebar Display** – Self-intersecting rebar displays properly and will be shown as bent over and on top of itself.
- ❖ **Analytical Model Color Coding** – You can now select “Differentiate ends of linear analytical elements” to help identify where the structural elements begin and end.
- ❖ **Enable Analytical Model** – There is now a simple feature that let's you select if a physical element is structural. If you deselect the “Enable Analytical Model” parameter then it will not be considered in the analytical model.

Note: Revit MEP/ Structure has all of the updates that Revit Architecture has.

Courtesy: www.thecadmasters.com

How Building Information Modeling Helps Buildings Go Green



A careful measurement and planning is essential in producing any quality product, and when it comes to the building industry, a lot of time and effort is spent on measuring and analyzing how a building's design will interact with materials and environmental conditions like wind, sunlight, water and

gravity. In the last couple of decades the building industry has gone digital and building measurement and analysis tools have become increasingly high tech.

Building Information Modeling (BIM) is digital software that creates a 3D representation of a building, which is layered with additional project information. It is sometimes referred to as a “5D representation of a building”, where the 4th and 5th dimension is time and cost. BIM software is a promising tool that allows architects and engineers to digitally model the different elements of a building (shape, structure, heating / cooling, cost, materials etc) in real-time and quickly understand how specific changes in design or construction models will impact other

variables like structure, loads, energy efficiency and the fiscal bottom line.

BIM has especially helped to enable sustainable design – allowing architects and engineers access to higher tech tools than ever before to carefully integrate and analyze things like heat gain, solar, ventilation, and energy efficiency in their designs. BIM is not the same thing as 3D CAD modeling – the fundamental purpose of CAD is to illustrate and help people visualize how a building will look, whereas BIM provides detailed information about how a building will function. Because BIM increases efficiency in the design process, it is a boon to sustainable design.

Tech Talk

Importing a Google Earth image into Civil 3D

– a new level of interaction between engineering design tools and Google Earth

For years, Google has collected and served geospatial data from all over the world. This massive library of street mapping, satellite and aerial photographs, digital terrain model data and more is available for browsing through a free utility called Google Earth. Although Google Earth is similar to other online mapping systems such as Microsoft's Virtual Earth, there is one big difference -- Civil 3D can import terrain and image data directly from Google Earth, as well as publish

its own 3D data for viewing within the Google Earth utility.

You can publish not just points, but more complex objects such as parcels, alignments, corridor models, surfaces and hydraulic networks. The utility creates a KML file that can be opened directly in Google Earth. By simply providing an URL to the KML file you can allow others to view and navigate your design data in Google Earth. Secondly,

inside Google Earth, you and others can add layers of data, including buildings, transportation systems and other data to build geospatial context. You can also include such visualization capabilities as realistic “drive-throughs” along road centerlines and snapshots of locations and you can associate design points with 3D objects, such as light poles, houses and cars along a street.

Courtesy: www.geospatialblogs.com / www.cadalyst.com

Revit MEP 2012

- ❖ **System Browser** – The improved browser makes it easier to find elements in your model. You can hide and find elements by type. You will also find that model elements will highlight as you select them in the system browser.
- ❖ **Placeholders** – These elements can be used in the early stages of the design to reserve space when you are still unsure of the final locations. Very useful for collision detection when you know the approximate location of elements, but not the final design.
- ❖ **Sloped Piping** – Its now easier to create sloped pipes with more control. You will be able to see the elevation and slope of the pipe and use that to connect sloped pipes directly to each other.
- ❖ **Parallel Conduit and Pipe Runs** – This lets you automatically create parallel conduits and pipes.

New Features

